

FTP Instructions for Teacher Webs

Log on to the FTP server:

Address: `ftp://teacherweb.hayscisid.net/web/rosebrol`

ftp://teacherweb.hayscisid.net/web/yourusername

Login As

Either the server does not allow anonymous logins or the e-mail address was not accepted.

FTP Server: `teacherweb.hayscisid.net`

User Name: `hayscisid.net/rosebrol`

Password:

After you login, you can return to this FTP server easily by adding it to your Favorites list.

Login Anonymously Save Password

FTP Server: teacherweb.hayscisid.net
User Name: hayscisid.net/yourusername
Password: your password

Address: `ftp://teacherweb.hayscisid.net/web/rosebrol/`

rosebrol

Server: `teacherweb.hayscisid.net`
User Name: `hayscisid.net/rosebrol`

[Click here](#) to learn about browsing FTP

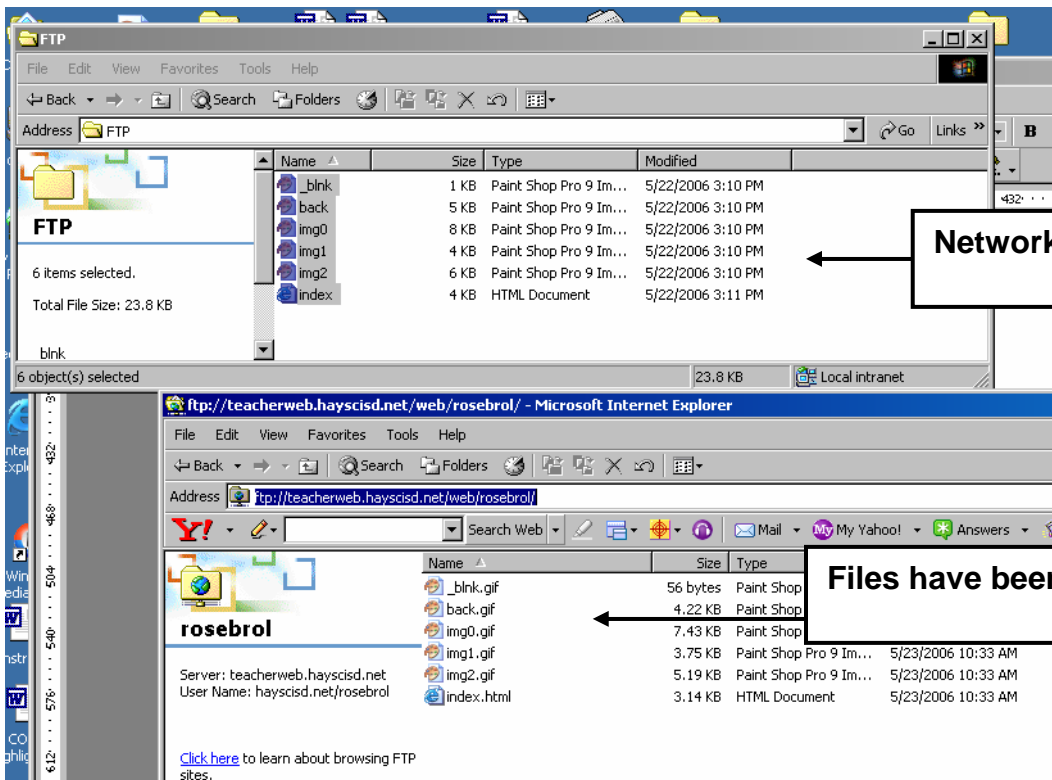
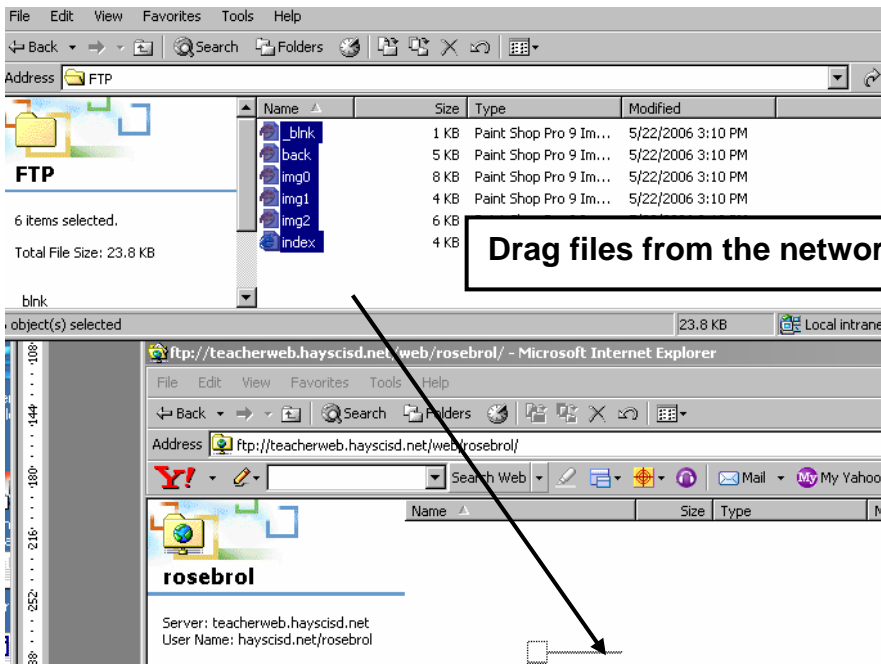
You are now on the FTP server.
There are no files in the folder initially.
Here is where webpage files will be placed for viewing over the internet.

Placing files on the FTP server:

FTP

Name	Size	Type	Modified
_blink	1 KB	Paint Shop Pro 9 Im...	5/22/2006 3:10 PM
back	5 KB	Paint Shop Pro 9 Im...	5/22/2006 3:10 PM
img0	8 KB	Paint Shop Pro 9 Im...	5/22/2006 3:10 PM
img1	4 KB	Paint Shop Pro 9 Im...	5/22/2006 3:10 PM
img2	6 KB	Paint Shop Pro 9 Im...	5/22/2006 3:10 PM
_lay	4 KB	HTML Document	5/22/2006 3:11 PM

Browse to the network drive where the webfiles are stored.
From Edit menu, choose Select All



Test the website:

